

# パーソナルモビリティ

## Personal Mobility Vehicle

須田研PMVのコンセプト:

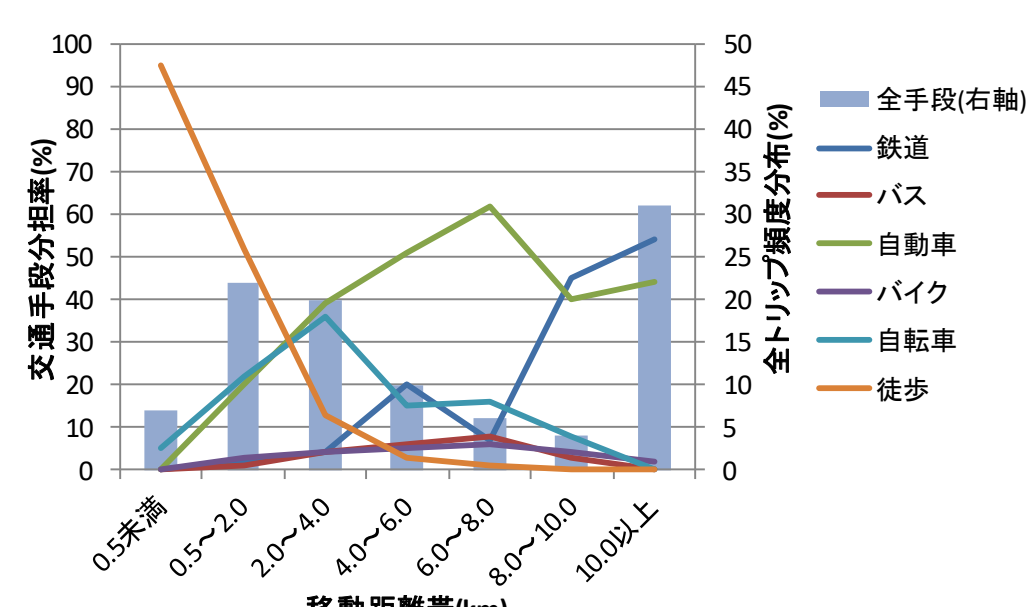
- 人と環境にやさしい動力で、快適かつ効率的な近・中距離移動を実現します。
- 道路空間のみならず、歩道、施設内での歩行者混在環境でも安全に使用されます。
- 鉄道などの公共交通や自動車に持ち込める可搬性があります。

PMV has the unique features as follows:

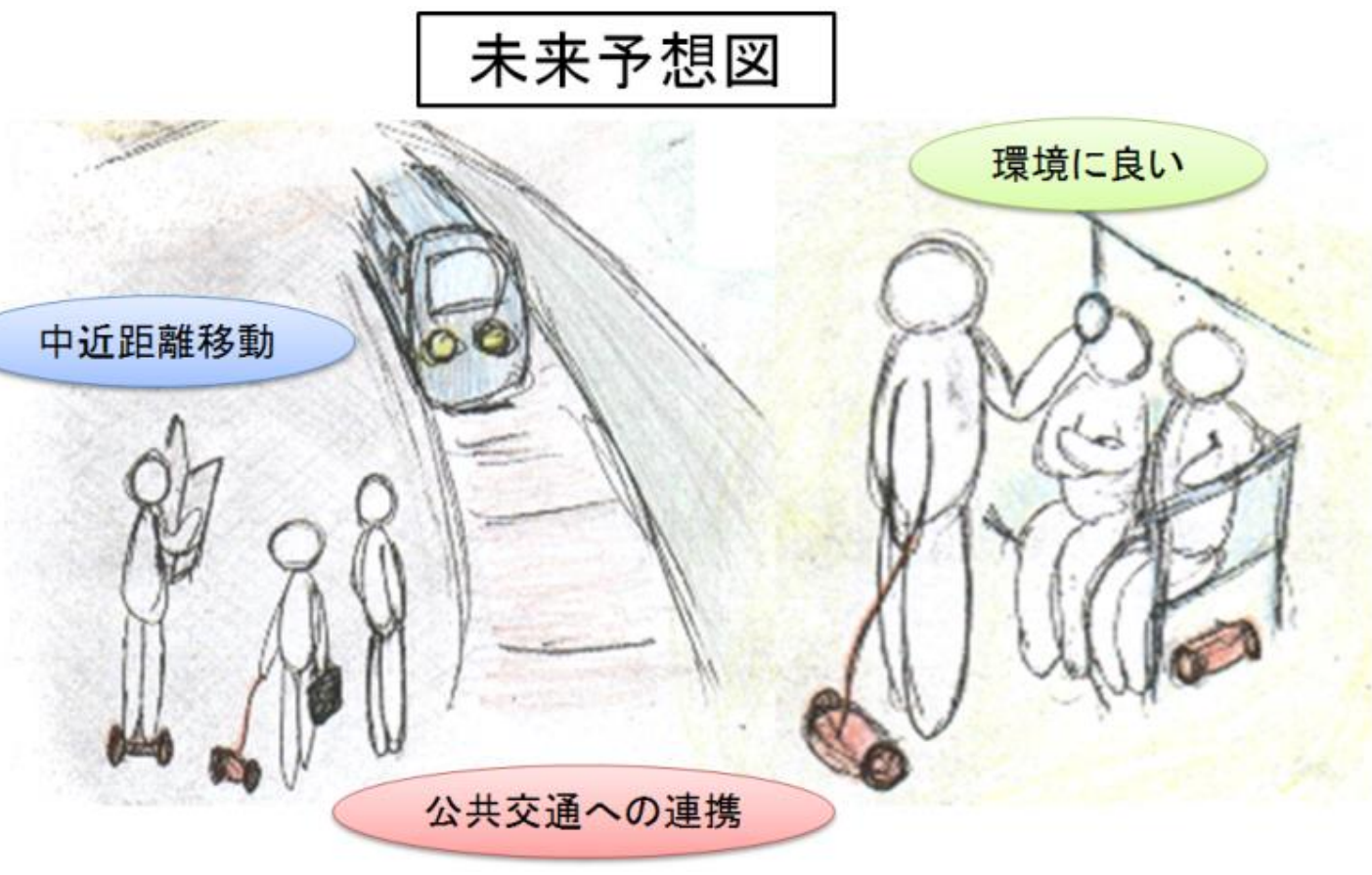
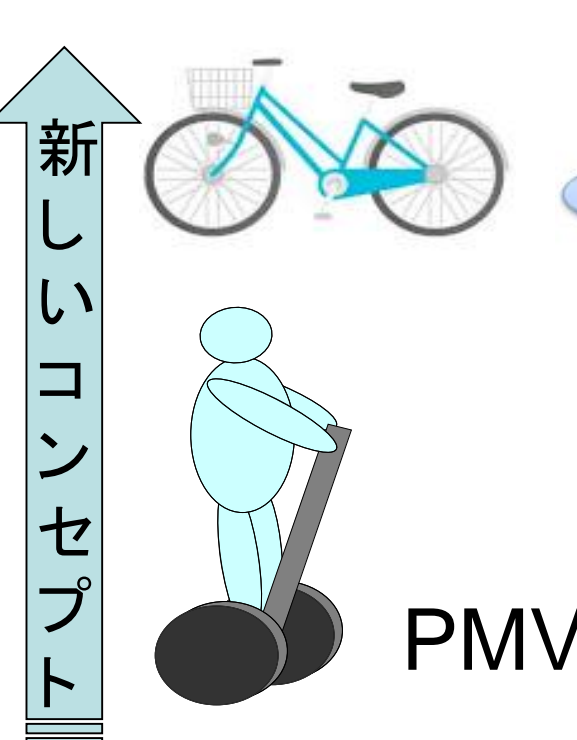
- Powered by human and environmental friendly energy, it can realize comfortable and efficient near and medium range mobility.
- Not limited to road space, it also can be used safely in sidewalk and inside facility, where it is occupied by many pedestrians.
- It has the portability to bring into cars and public transportations such as railway.

### PMVの概要

PMV Overview

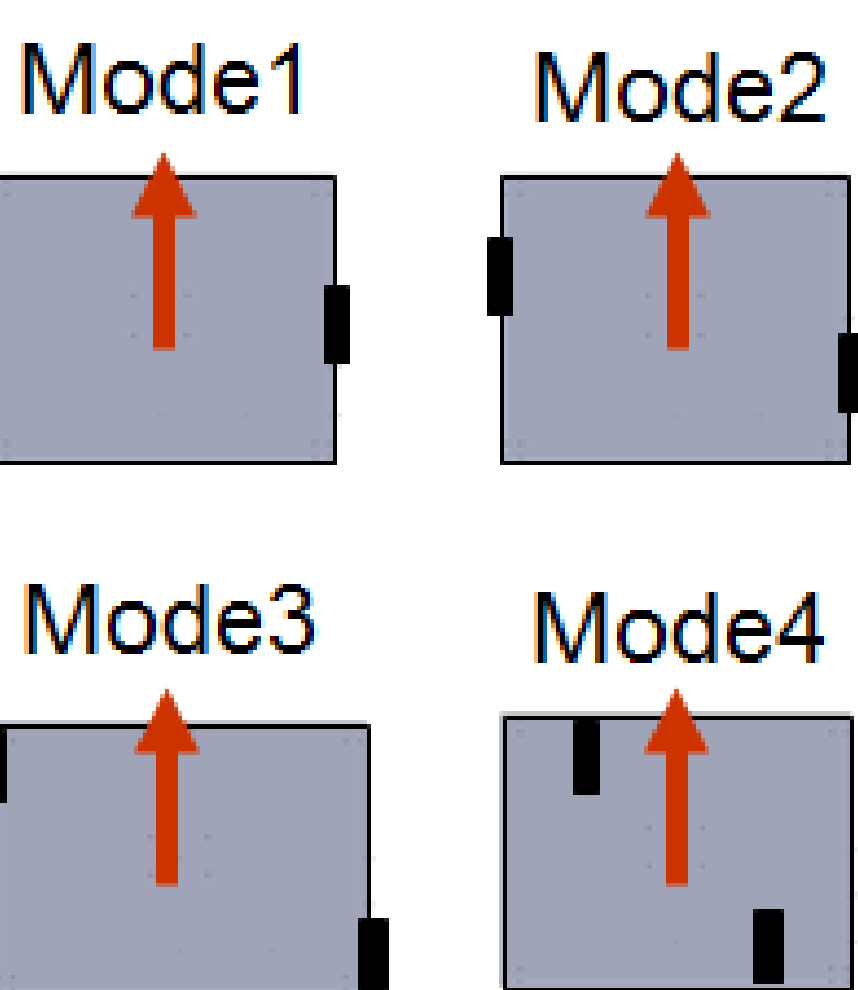


PMVを用いた場合、CO2削減可能



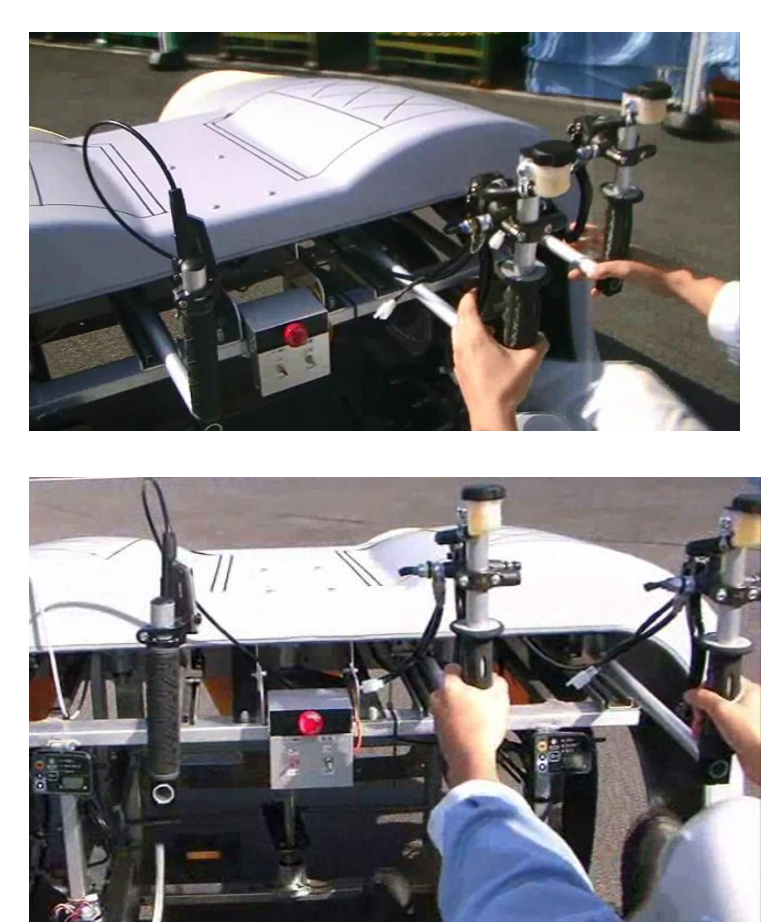
### 非同一軸上の車輪を有する PMV

PMV with Different Axis Wheel Arrangement  
Stavic-A



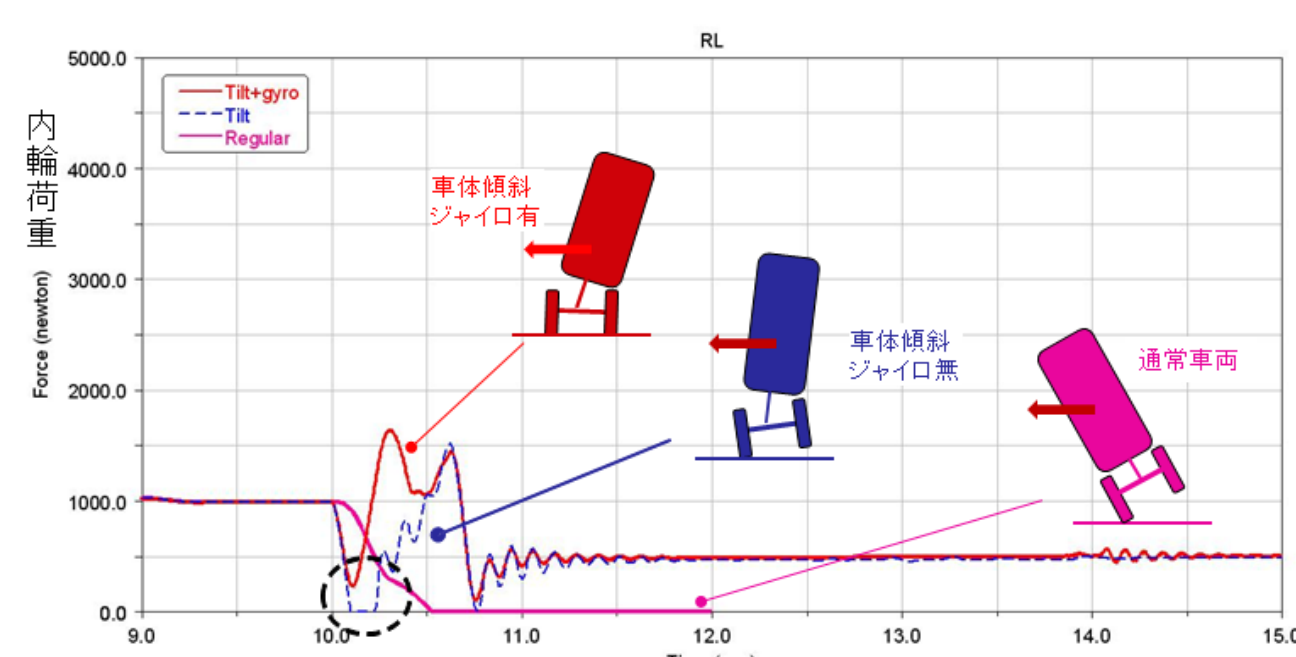
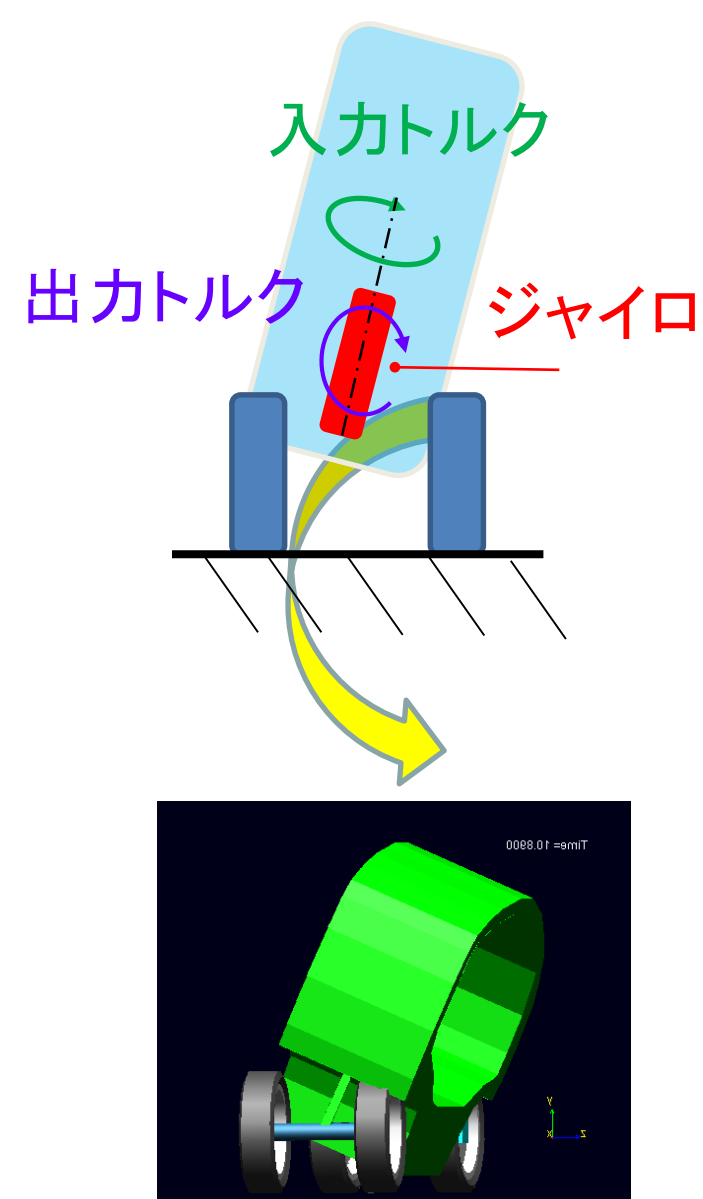
### 次世代スマートモビリティ Stavic-4H

Next Generation Smart Mobility



### 超小型モビリティ車両 (MBD解析)

Ultra-Compact Mobility Vehicle (MBD Analysis)



### PMVの研究展開動向

PMV Research Development Trend

